

# SETDECK RISERS FOR HIRE



FROM A SINGLE DRUM RISER TO A COMPLETE MULTI-TIERED STAGE



SetDeck is a complete stage riser system for hire, providing ultra compact decks that can make anything from a simple rolling riser to a complete temporary performance stage with numerous linked decks. It was originally conceived for touring bands to create a drum riser, risers for the back line or tiered decking for the whole stage.

SetDeck's extremely low-profile design means it takes up less truck space and you can create a riser or stage from just 6 inches high up to 8ft or more high. It comes in a variety of shapes and sizes and can be quickly configured by adding legs, wheels, H-frames, steps and handrails.

Our standard hire stock of SetDeck is covered in hard wearing grey carpet, to provide a clean, neat and instant finish.

SSE supplies risers for hire to leading artists, tours, festivals, theatres, schools and colleges - anywhere where you need your performance elevated!

Call SSE Risers on 01527 528822 • [risers@sseaudio.com](mailto:risers@sseaudio.com) • [www.sseaudiogroup.com/risers](http://www.sseaudiogroup.com/risers)  
Rentals are subject to our Hire Terms & Conditions – see [www.sseaudiogroup.com/terms](http://www.sseaudiogroup.com/terms)

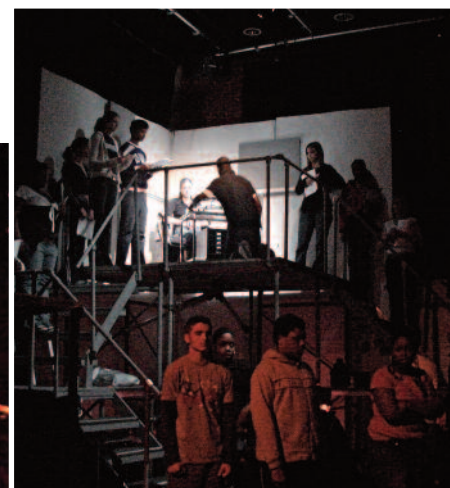
1

## SETDECK - RISING TO THE OCCASION

SetDeck has been used by leading artists on tours around the world, and is backed by the international rental pedigree of SSE Audio Group.

### Recent Clients

Alison Moyet	Global Gathering	Muse	The Enemy
BBC Radio 1	God's Kitchen	National Exhibition Centre	The Klaxons
Bill Bailey	Haydn Festival	Oxegen Festival	Thunder
Billy Ocean	Hop Farm Festival	Placebo	Tori Amos
Birmingham City Council	Human League	Portishead	Travis
Birmingham Theatre School	James	Queens of the Stone Age	UB40
Celine Dion	Jasper Carrot	Russell Watson	V Festival
Clannad	Kanye West	Rod Stewart	Wella
Cropredy	Keane	Simple Minds	Wet Wet Wet
Download	Latitude	Slayer	Whitesnake
Duffy	Lost Prophets	Sophie Ellis Bextor	Wombourne & District Choral Society
Elaine Paige	Madness	Squeeze	Yazoo
Funeral for a friend	Mark Ronson	Stevie Wonder	
Glastonbury	Men vs Cancer	Supergrass	
Give it a Name	Metro Festival, Cardiff	The Doves	



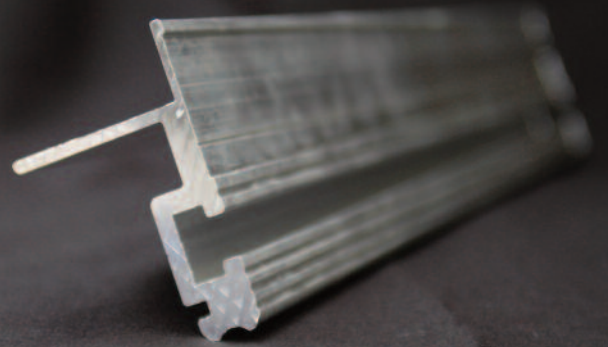
Main Picture: Wet Wet Wet.  
Top left: UB40. Top right:  
Birmingham Theatre School.

Call SSE Risers on 01527 528822 • [risers@sseaudio.com](mailto:risers@sseaudio.com) • [www.sseaudiogroup.com/risers](http://www.sseaudiogroup.com/risers)  
Rentals are subject to our Hire Terms & Conditions – see [www.sseaudiogroup.com/terms](http://www.sseaudiogroup.com/terms)

2

# SETDECK - HOW IT WORKS

Manufactured by SSE Audio Group, each deck is based on our proprietary design aluminium extrusion with a profile of only 3 inches (76mm), making it extremely compact. The profile contains several practical features that contribute to the flexibility of the SetDeck system.



1. Concealed locks rotate out from the extrusion to firmly secure two decks together.
2. Leg clamps are provided on the underside of each deck so legs, H-frames or wheels can be quickly attached.
3. Wheeled 'Y' legs bolt into two adjacent leg clamps joining risers in a rolling riser.

## Steps and Handrails

Aluminium steps with carpet-covered wooden treads are bolted to decks with supplied clamps. They are available in various heights and widths.



*Handrails are securely bolted to the deck profile and are available in a range of configurations.*

*Handrails and accessories are bolted to the deck using the slot in the deck profile. Above this, velcro strip enables skirts to be attached.*



Deck heights from 6 inches to 3ft high can be assembled from standard legs, or up to 8ft high with H-frames.

Rolling risers up to 3ft high use lockable wheeled legs (and frames).

## All Shapes and Sizes

The SetDeck range uses imperial measurements, with the basic (and most popular) deck measuring 8ft x 4ft. Two of these decks creates a very practical 8ft x 8ft drum or rolling riser.



*With the addition of various triangular decks, a variety of stage shapes can be achieved.*

*With the addition of our curved decks, an 8ft x 4ft riser is transformed into a circular riser with a diameter of 9ft.*



## Finishing

As standard, each deck is covered in hardwearing grey carpet providing an instant finish, so stages do not have to be separately carpeted. Alternative finishes are available such as painted wood and clear acrylic. We can supply black skirt drapes to finish the sides of risers (quoted per job).

## Designed for Touring

SetDeck was designed for the demands of touring.

Wheeled transporters, holding up to 8 decks, are provided to hirers at no extra charge. These fit three-across a standard truck width, so a total of 24 decks can pack across a truck. H-frame dollies are also available and all clamps, bolts and smaller accessories are supplied in flight case trunks.



Call SSE Risers on 01527 528822 • risers@sseaudio.com • www.sseaudiogroup.com/risers  
Rentals are subject to our Hire Terms & Conditions – see www.sseaudiogroup.com/terms

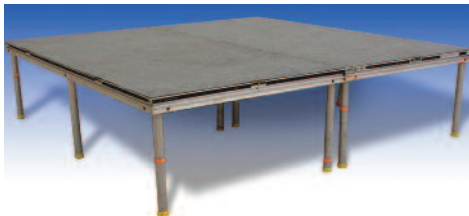
## SETDECK RATE CARD

To help you to choose the components you need, we have created the following simple packages. Further information to help you select the correct components is provided at [www.sseaudiogroup.com/risers](http://www.sseaudiogroup.com/risers), or call us to discuss your requirements.

### 8ft x 8ft x 2ft high Drum Riser

**comprising:**

2 decks • 12 single legs



Total £26.00 per day or £76.52 per week.

### 8ft x 8ft x 2ft high Rolling Riser

**comprising:**

2 decks • 6 single wheeled legs • 3 Y wheeled legs



Total £30.65 per day or £90.20 per week

Code	Description	Number of legs	weight (kg)	Daily dry hire price (£)	Weekly hire price (£)
<b>DECKS</b>					
SDI84LC	Standard Deck 8' x 4' (2440mm x 1220mm)	6	52	11.56	34.00
SDI83LC	Standard Deck 8' x 3' (2440mm x 915mm)	6	43	9.64	28.33
SDI82LC	Standard Deck 8' x 2' (2440mm x 610mm)	6	32	9.14	26.87
SDI64LC	Standard Deck 6' x 4' (1830mm x 1220mm)	6	41	10.39	30.53
SDI63LC	Standard Deck 6' x 3' (1830mm x 915mm)	6	38	9.64	28.33
SDI62LC	Standard Deck 6' x 2' (1830mm x 610mm)	4	30	8.96	26.33
SDI44LC	Standard Deck 4' x 4' (1220mm x 1220mm)	4	34	7.26	21.33
SDI43LC	Standard Deck 4' x 3' (1220mm x 915mm)	4	22	6.69	19.67
SDI42LC	Standard Deck 4' x 2' (1220mm x 610mm)	4	17	6.33	18.6
TDM315	Topdeck 3m x 1.5m (9ft 8" x 4ft 9")	6	90	12.93	38.00
TDI84RT	Right Angle Triangle Deck 8' x 4' (2440mm x 1220mm)	5	33	9.07	26.67
TDI83IT	Isosceles Triangle Deck 8' x 3' (2440mm x 915mm) 21°	5	30	9.07	26.67
TDI44T	Right Angle Triangle Deck 4' x 4' (1220mm x 1220mm)	3	19	6.73	19.8
TDI42T	Right Angle Triangle Deck 4' x 2' (1220mm x 610mm)	3	13	5.44	16.00
TDI43T	Isosceles Triangle Deck 4' x 3' (1220mm x 915mm) 41°	3	15	5.44	16.00

Call SSE Risers on 01527 528822 • [risers@sseaudio.com](mailto:risers@sseaudio.com) • [www.sseaudiogroup.com/risers](http://www.sseaudiogroup.com/risers)  
 Rentals are subject to our Hire Terms & Conditions – see [www.sseaudiogroup.com/terms](http://www.sseaudiogroup.com/terms)

# SETDECK RATE CARD

Code	Description	Number of legs	weight (kg)	Daily dry hire price (£)	Weekly hire price (£)
TDI426T	Isosceles Triangle Deck 4' x 2'6" (1220mm x 762mm) 35°	3	13	5.44	16.00
TDI416Y	Isosceles Triangle Deck 4' x 1'6" (1220mm x 457mm)	3	11	5.44	16.00
TDI825C	Curve Deck 8' x 2'6" (2440mm x 762mm)	5	29	9.34	27.47
TDI406C	Curve Deck 4' x 6" (1220mm x 152mm)	1		FOC when rented with TDI835C curve to make circular riser	
SDI44C	Quadrant Deck 4' x 4' (1220mm x 1220mm)	4	21	6.73	19.8

## LEGS

RL5	Leg for 6" (152mm) high riser		0.2	0.1	0.3
RL8	Leg for 9" (229mm) high riser		0.35	0.1	0.3
RL11	Leg for 1' (304mm) high riser		0.4	0.15	0.43
RL15	Leg for 16" (406mm) high riser		0.6	0.15	0.43
RL17	Leg for 18" (457mm) high riser		0.7	0.19	0.57
RL23	Leg for 2' (608mm) high riser		0.9	0.24	0.71
RL26	Leg for 2' 3" (686mm) high riser		1	0.24	0.71
RL29	Leg for 2' 6" (762mm) high riser		1.2	0.29	0.84

## H-FRAME LEGS

RH3	H-frame for 3' (914mm) high riser		4.5	1.94	5.7
RH4	H-frame for 4' (1220mm) high riser		6	2.02	5.93
RH5	H-frame for 5' (1524 mm) high riser		7	2.22	6.54
RH6	H-frame for 6' (1829 mm) high riser		8.5	2.97	8.74
RH7	H-frame for 7' (2134 mm) high riser		13	3.19	9.39
RH8	H-frame for 8' (2438 mm) high riser		14	3.28	9.65

## WHEELED LEGS

RL7W	Wheeled leg for 8" (203mm) high rolling riser		1	0.56	1.65
RL7WY	Wheeled 'Y' leg for 8" (203mm) high rolling riser		1.5	0.92	2.7
RL11W	Wheeled leg for 1' (305mm) high rolling riser		1.5	0.61	1.78
RL11WY	Wheeled 'Y' leg for 1' (305mm) high rolling riser		1.9	1.06	3.11
RL17W	Wheeled leg for 18" (457mm) high rolling riser		2	0.65	1.91

Call SSE Risers on 01527 528822 • risers@sseaudio.com • www.sseaudiogroup.com/risers  
Rentals are subject to our Hire Terms & Conditions – see www.sseaudiogroup.com/terms

5

## SETDECK RATE CARD

Code	Description	weight (kg)	Daily dry hire price (£)	Weekly hire price (£)
RL17WY	Wheeled 'Y' leg for 18" (457mm) high rolling riser	2.2	1.1	3.25
RL23W	Wheeled leg for 2' (610mm) high rolling riser	2.2	0.68	2.01
RL23WY	Wheeled 'Y' leg for 2' (610mm) high rolling riser	2.5	1.15	3.38
RL35HW	Wheeled H-frame set for 3' (914mm) high rolling riser	35.9	11.66	35.00

### STEPS

RS232	Steps for 2' (610mm) high riser - steps 3' (915mm) wide		3.4	10.00
RS323	Steps for 3' (915mm) high riser - steps 2' (610mm) wide		4.76	14.00
RS333	Steps for 3' (915mm) high riser - steps 3' (915mm) wide		4.76	14.00
RS434	Steps for 4' (1220mm) high riser - steps 3' (915mm) wide with 4 tread steps		5.62	16.53
RS435	Steps for 4' (1220mm) high riser - steps 3' (915mm) wide with 5 tread steps		6.01	17.67
RS445	Steps for 4' (1220mm) high riser - steps 4' (1220mm) wide with 5 tread steps		6.24	18.33
RS526	Steps for 5' (1524 mm) high riser - steps 2' (610mm) wide		6.24	18.33
RS547	Steps for 5' (1524 mm) high riser - steps 4' (1220mm) wide		6.8	20.00

### HANDRAILS

RHR8	Handrail 8' (2440mm) wide section		2.66	8.00
RHR6	Handrail 6' (1829 mm) wide section		2.00	6.00
RHR4	Handrail 4' (1220mm) wide section		1.33	4.00
RHR4E	Handrail 4' (1220mm) wide end section		1.33	4.00
RHR3S	Step handrail 3' (915mm)		1.33	4.00
RHR4S	Step handrail 4' (1220mm)		1.66	5.00

This rate card published April 2009

All prices are for dry hire, excluding transport, crew and VAT.

Delivery and Collection can be provided (price on application).

Instructions and Guidance is provided to hirers enabling you to build decks safely and effectively.

Full Hire Terms and Conditions can be found at [www.sseaudiogroup.com/terms](http://www.sseaudiogroup.com/terms)

Call SSE Risers on 01527 528822 • [risers@sseaudio.com](mailto:risers@sseaudio.com) • [www.sseaudiogroup.com/risers](http://www.sseaudiogroup.com/risers)  
Rentals are subject to our Hire Terms & Conditions – see [www.sseaudiogroup.com/terms](http://www.sseaudiogroup.com/terms)

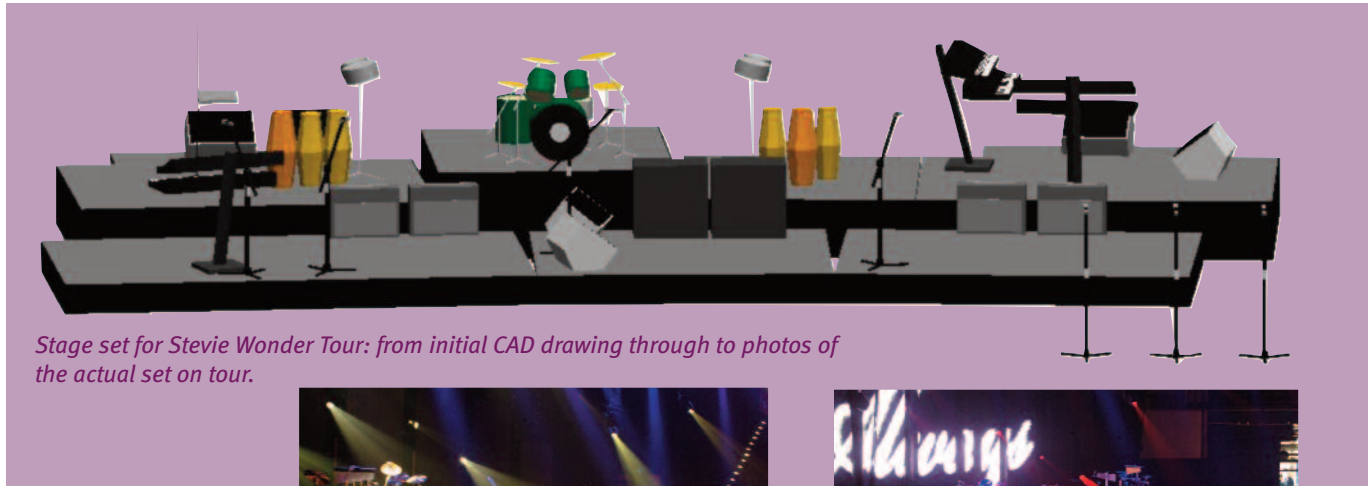
6

# CUSTOM STAGE SOLUTIONS

Based on the SetDeck concept, we can design and build a full scale stage or set, with multiple levels and customised features. We have a full manufacturing facility in-house, so we can easily customise units to suit your requirements.

To discuss your requirements, please call Pete 'Boot' Ellis at SSE Risers on 01527 528822.

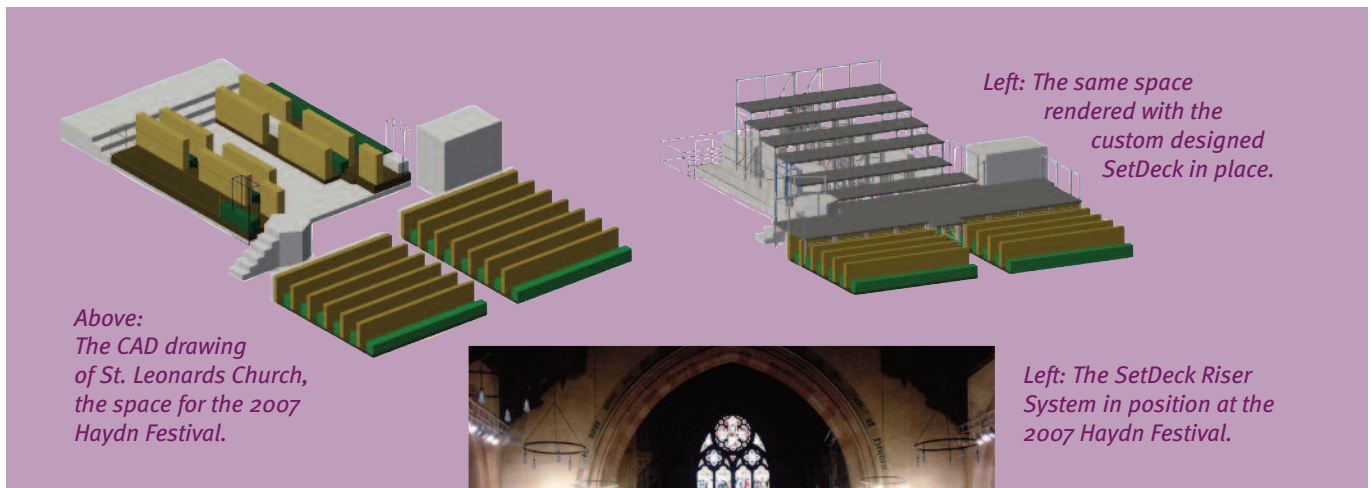
## Case Study: Stevie Wonder



Stage set for Stevie Wonder Tour: from initial CAD drawing through to photos of the actual set on tour.



## Case Study: Haydn Festival



Above: The CAD drawing of St. Leonards Church, the space for the 2007 Haydn Festival.

Left: The same space rendered with the custom designed SetDeck in place.



Left: The SetDeck Riser System in position at the 2007 Haydn Festival.

